



HEALTHCARE

[Go to Nursing Pathways Page](#)

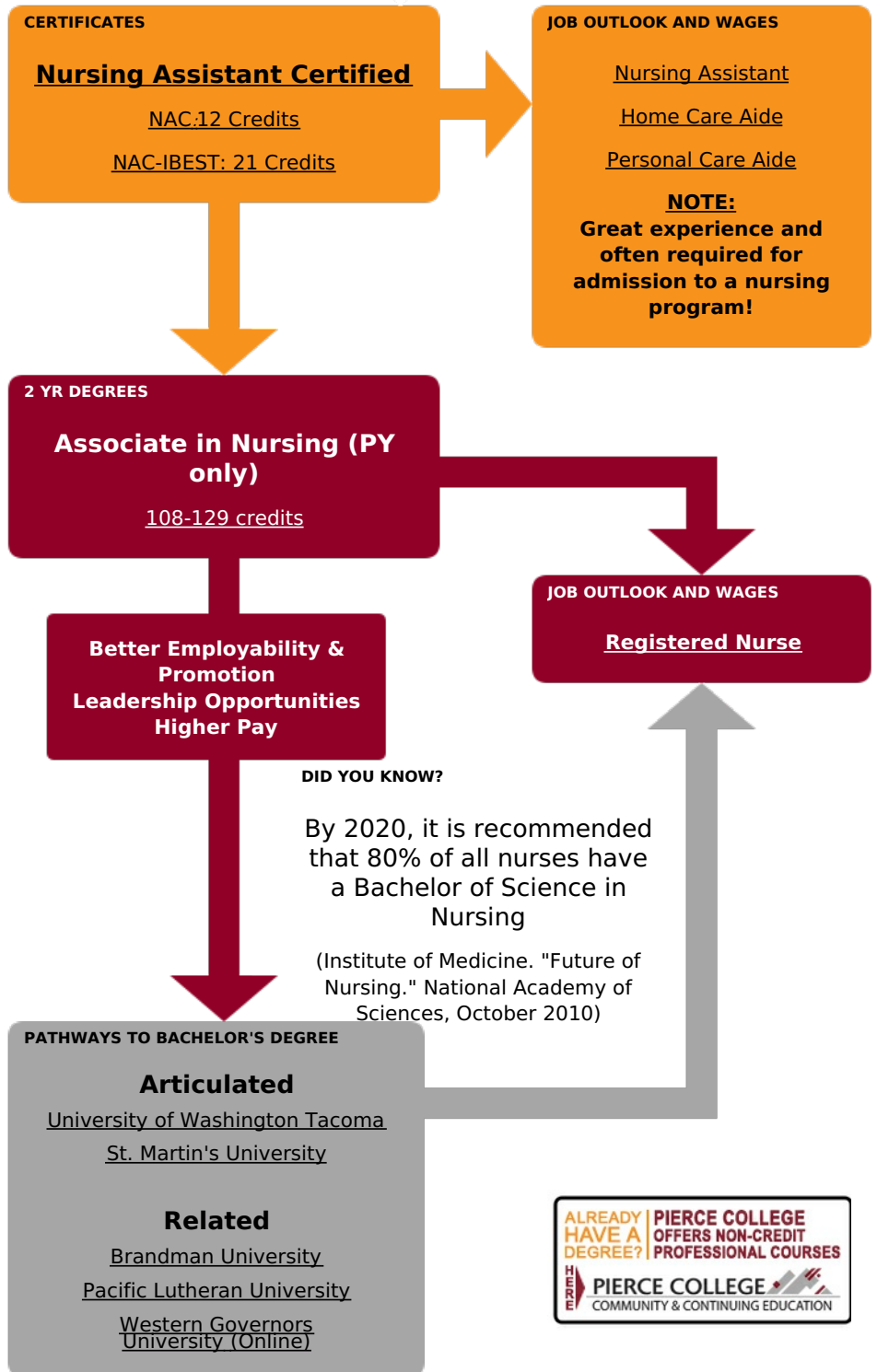


**NURSING**

**Eustenia (Stania) Kasjan, M.A.**  
 Allied Health Manager  
 Nursing/Advising  
 253-840-8355

SPECIAL PROGRAM REQUIREMENTS

**Background/disqualifying factors**



**CAREER EXPLORATION & EMPLOYMENT**

What can I do in this career field?

**ONET OnLine**

Is this career field right for me?



Will this career field meet the needs of my family?



Receive support from:

**Job and Career Connections Office**

to access and use:



PROFESSIONAL RESOURCES:



---

**RELATED  
PROGRAMS:**

**Pre-Nursing  
(DTA/MRP)**

**Emergency  
Medical  
Services**

**Kinesiology**

**Physical  
Therapist  
Assistant**

**Dental  
Hygiene**

---

PLEASE SEND COMMENTS OR CORRECTIONS TO:

**Roadmap Helpdesk**

**Non-Discrimination Policy:** *The Pierce College District does not discriminate on the basis of race, color, creed, religion, national origin, sex, sexual orientation, age, gender, marital status, disability, or status as a disabled or Vietnam era veteran.*

BROUGHT TO YOU BY:

