

Healthcare Programs: [Program Details](#)

FIRST STEP: Career Exploration

What can I do in this Career Field?



Is this a growing Career Field?



WA U.S.

Is this Career Field right for me?



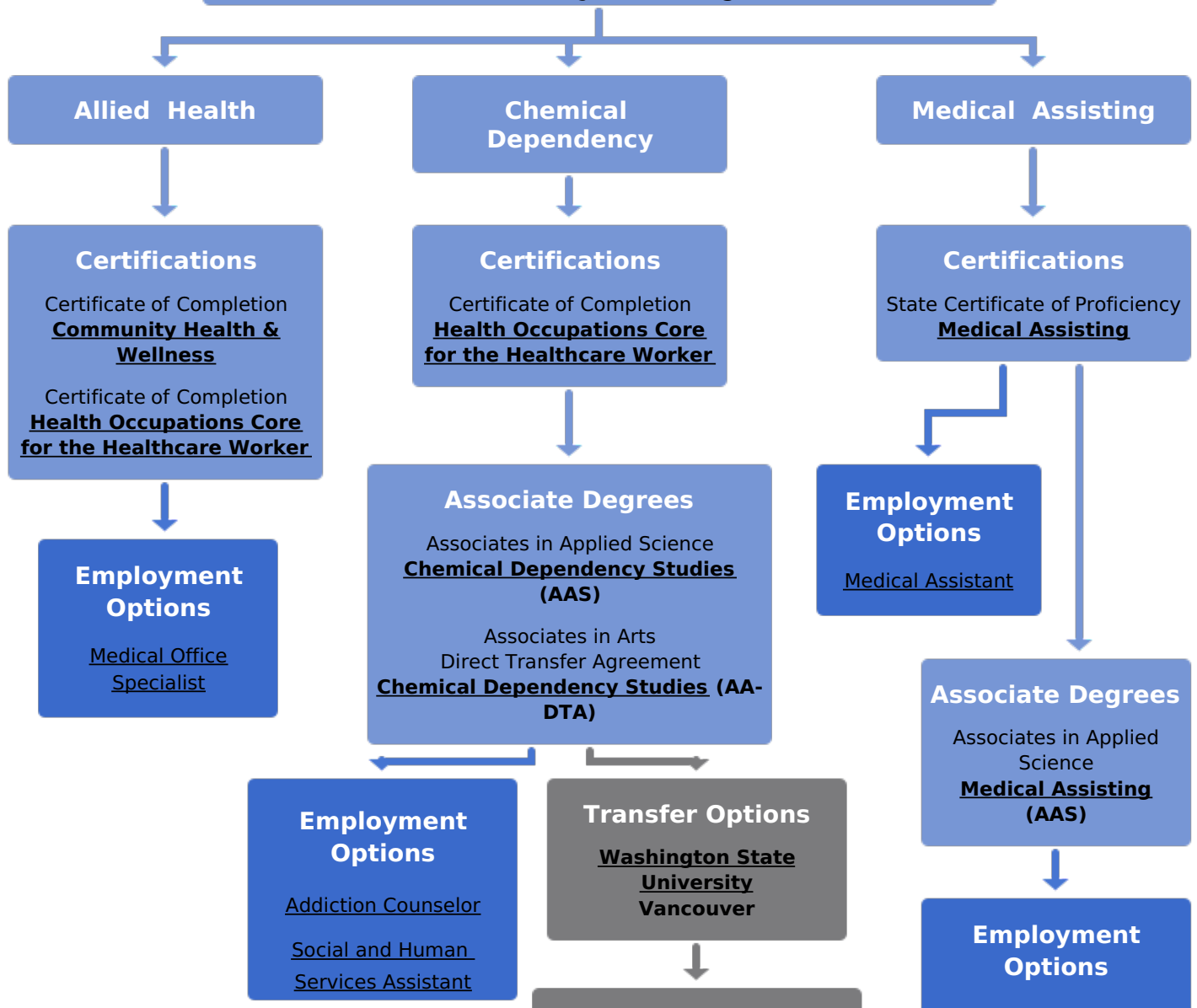
Explore More at: [LCC Career Connections](#)

SECOND STEP: Program Requirements

Background Clearance

THIRD STEP: Choose A Pathway

Related Programs: **Nursing**



Employment Options

[Substance Abuse Social
Workers](#)

[Probation Officers &
Correctional
Treatment Specialists](#)

[Medical Assisting](#)

[Medical Lab Technician](#)

[Medical Records & Health
Information Technicians](#)

FOURTH STEP: Get Started



[Admissions](#)

[Financial Aid](#)

[Childcare](#)

[Transfer Credits](#)

[Placement](#)

1600 Maple Street, Longview, WA 98632 Phone: 360-442-2601

PLEASE SEND COMMENTS OR CORRECTIONS TO:

Roadmap Helpdesk

Non-Discrimination Policy: *The Pierce College District does not discriminate on the basis of race, color, creed, religion, national origin, sex, sexual orientation, age, gender, marital status, disability, or status as a disabled or Vietnam era veteran.*

BROUGHT TO YOU BY:

WACareer paths logo