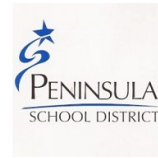


Print Technology Pathway:

Create ★ Communicate ★ Design

Be creative! This Pathway allows you to express, interpret, and present information to audiences through print and visual technology.

[Go to PSD Pathways to Pierce Home](#)



CAREER EXPLORATION

What can I do in this Career Field?

MY NEXT MOVE

Is this Career Field growing?

WA



U.S.



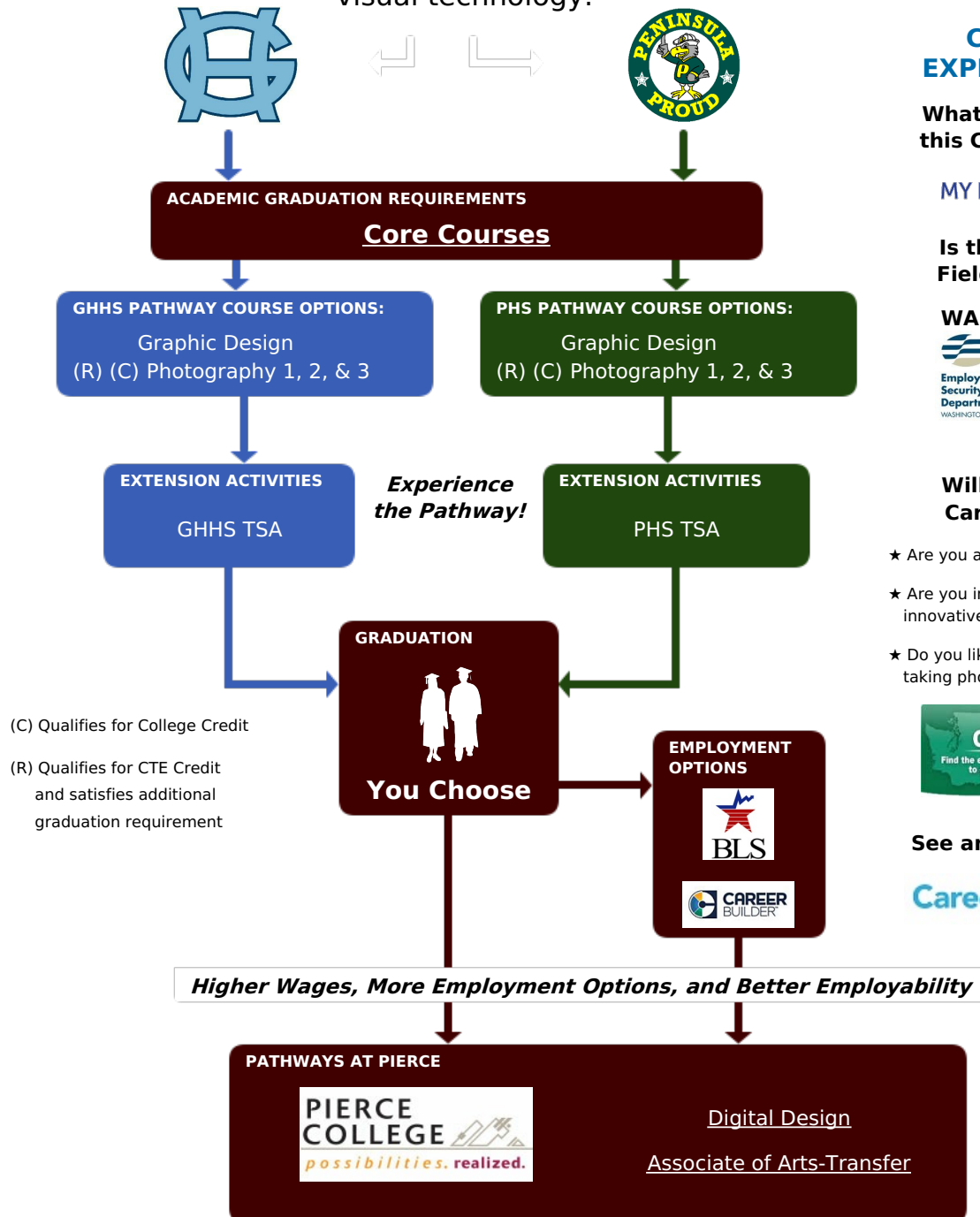
Will I like this Career Field?

- ★ Are you a creative thinker?
- ★ Are you imaginative, innovative, and original?
- ★ Do you like drawing, taking photos, or writing?



See an Advisor for:

Career Cruising



PLEASE SEND COMMENTS OR CORRECTIONS TO:

[Roadmap Helpdesk](#) Last Update: 5/2016

BROUGHT TO YOU BY:

