

Return to Edmonds CC Career Pathways



BUSINESS INFORMATION TECHNOLOGY

PROGRAM DETAILS VIDEO

Kathie Richer
425-640-1242
kricher@email.edcc.edu

Stephanie Bevans
425-640-1346
stephanie.bevans@edcc.edu

Kari Meehan
425-640-1641
kari.meehan@email.edcc.edu



RELATED PROGRAMS
Paralegal Studies
Medical Office

CAREER EXPLORATION
What can I do in this Career Field?



Is this the right career for me?



Veteran's Resource Center

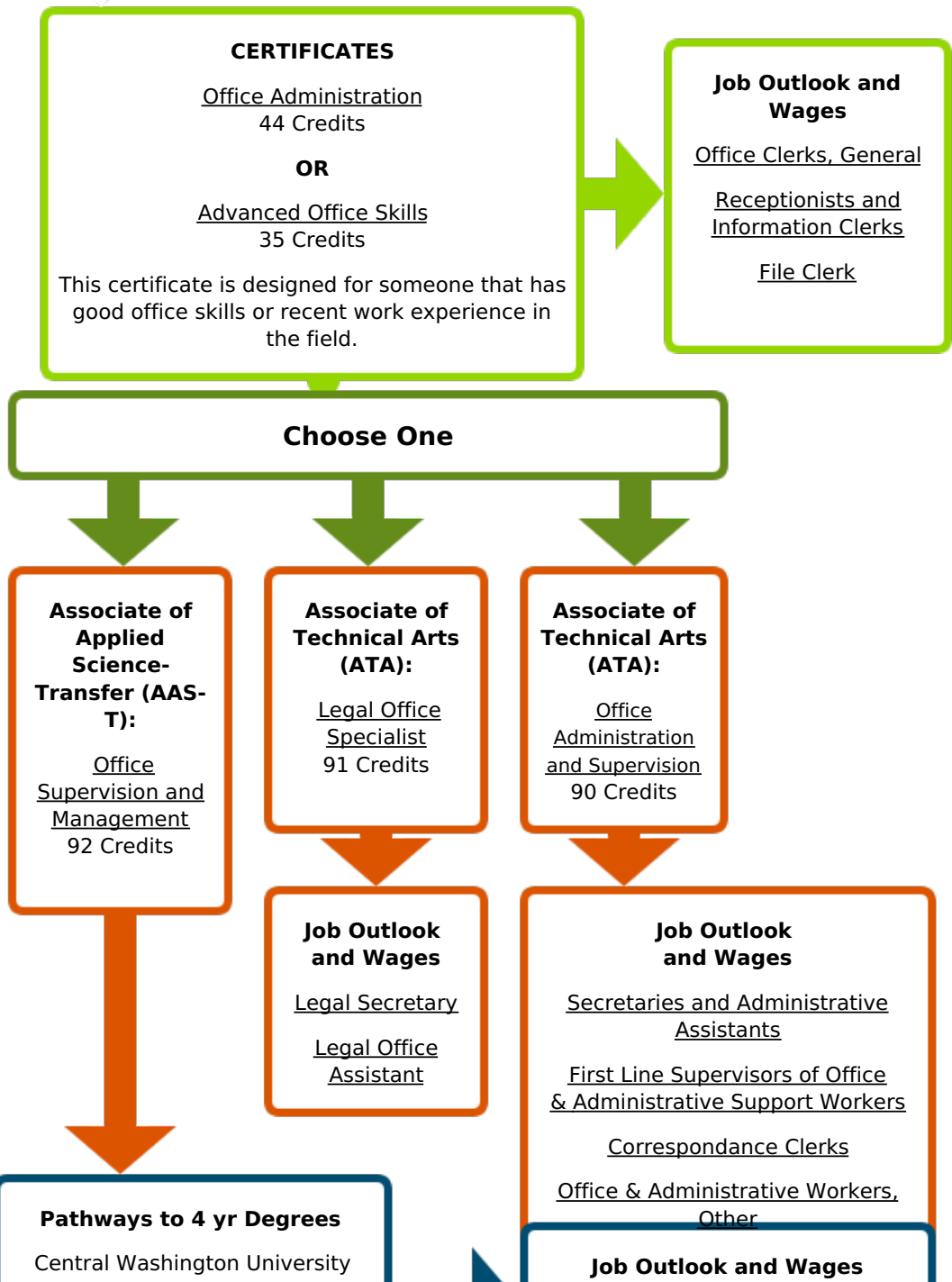
Services for students with disabilities

Counseling & Resource Center

to access and use



EMPLOYMENT ASSISTANCE
Career Action



Center
425-640-1256
Internships
Job Search Resources
Networking Events

92 Credits Transfer to
Bachelor of Applied Science
in Information Technology and
Administration Management

Degree plus Experience
Administrative Service Manager

PROFESSIONAL ORGANIZATIONS AND CERTIFICATIONS:



Ready to get started?

STEP ONE: Apply for Admission

STEP TWO: Complete an assessment to ensure the right placement in math and english courses

STEP THREE: Attend a new student advising session

Print Getting Started Checklist

EDMONDS COMMUNITY COLLEGE 20000 68TH AVE W, LYNNWOOD, WA 98036, 425.640.1459

Edmonds Community College does not discriminate on the basis of race, color, religion, national origin, sex, disability, sexual orientation, age, citizenship, marital or veteran status or genetic information in its programs and activities.

BROUGHT TO YOU BY:

The logo for WA Career Paths features the text "WA Career Paths" in a stylized, blue and white font, with a blue arrow pointing to the right behind the text.