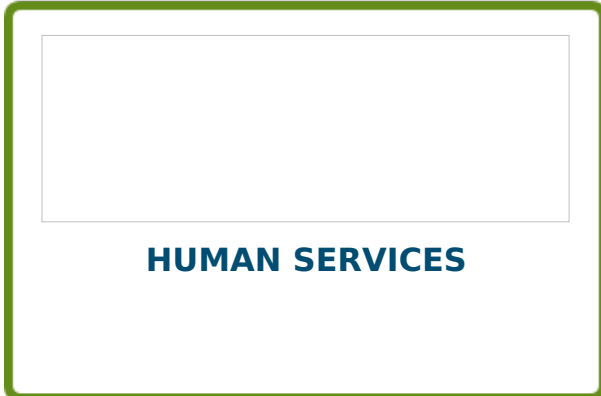


[Return to EDCC Career Pathways](#)



[PROGRAM DETAILS](#)   [VIDEO](#)

**Christina Coiro**  
425-640-1981  
[ccoiro@email.edcc.edu](mailto:ccoiro@email.edcc.edu)

**Karen Townsend**  
425-640-1595  
[karen.townsend@email.edcc.edu](mailto:karen.townsend@email.edcc.edu)



**RELATED PROGRAMS**  
[Addiction Studies](#)  
[Allied Health](#)

**CAREER EXPLORATION**  
**What can I do in this Career Field?**  
[O-NET OnLine](#)

**Is this the right career for me?**

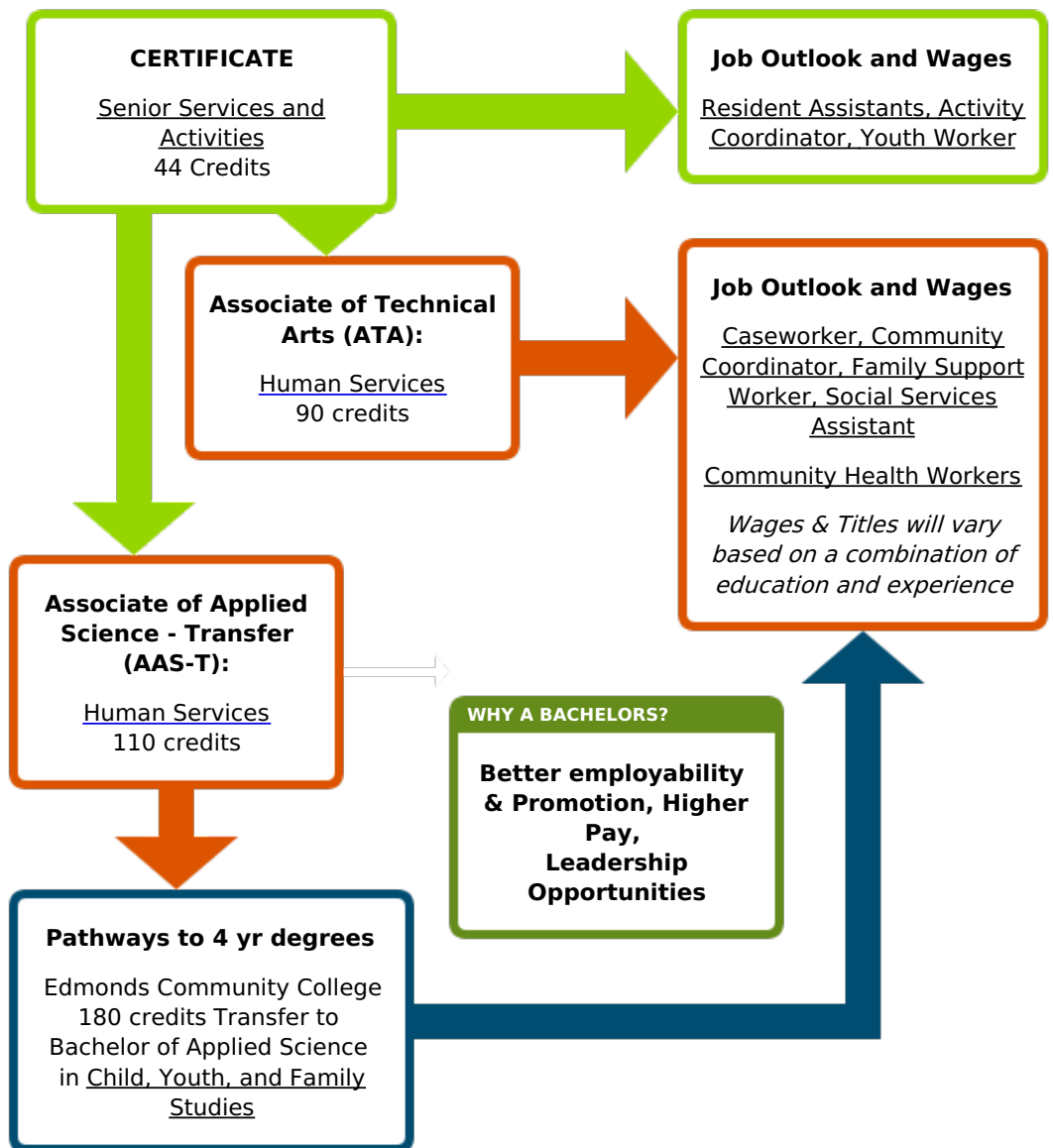
[Veteran's Resource Center](#)

[Services for students with disabilities](#)

[Counseling & Resource Center](#)

**to access and use**

**EMPLOYMENT ASSISTANCE**  
**Career Action Center**  
425-640-1256



**PROFESSIONAL ORGANIZATIONS AND CREDENTIALS:**

content

***Ready to get started?***

**STEP ONE: Apply for Admission**

**STEP TWO: Complete an assessment to ensure the right placement in math and english courses**

**STEP THREE: Attend a new student advising session**

***Print Getting Started Checklist***

---

**EDMONDS COMMUNITY COLLEGE 20000 68TH AVE W, LYNNWOOD, WA 98036, 425.640.1459**

**Edmonds Community College** *does not discriminate on the basis of race, color, religion, national origin, sex, disability, sexual orientation, age, citizenship, marital or veteran status or genetic information in its programs and activities.*

**BROUGHT TO YOU BY:**

*WACareer paths log*